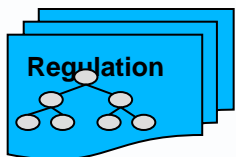
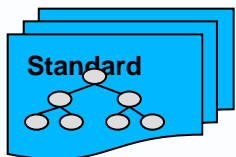
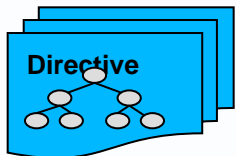
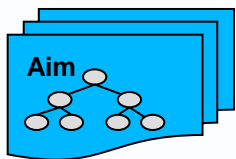
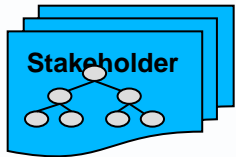
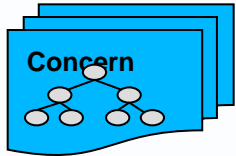


Avancier Methods (AM)

Initiation and Context diagrams

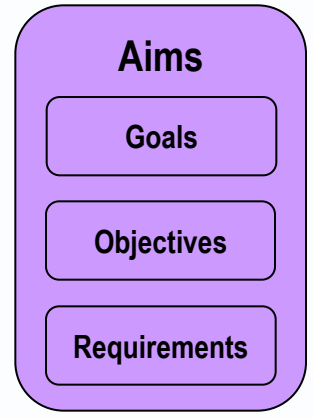
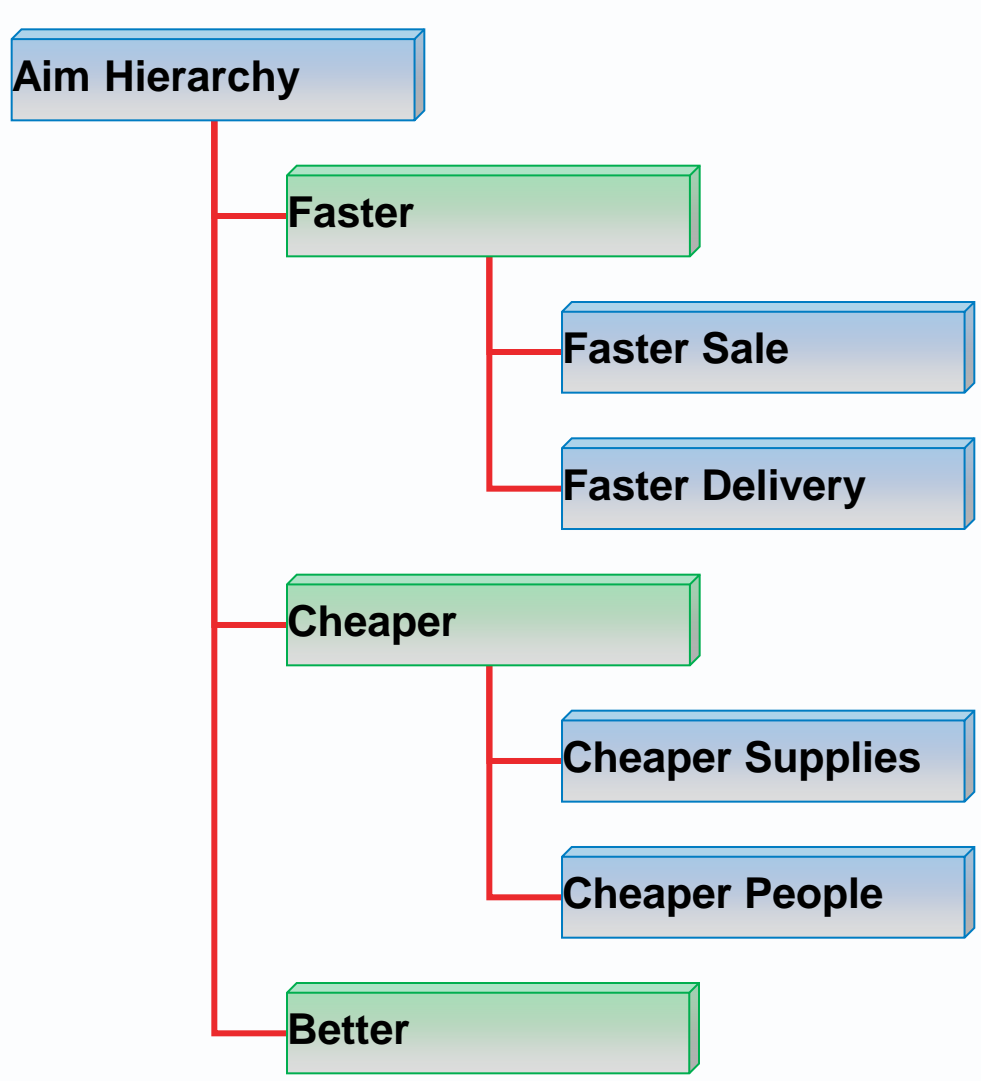
in the AM viewpoint library

It is illegal to copy, share or show this document
(or other document published at <http://avancier.co.uk>)
without the written permission of the copyright holder

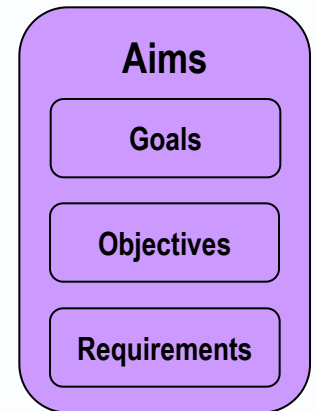
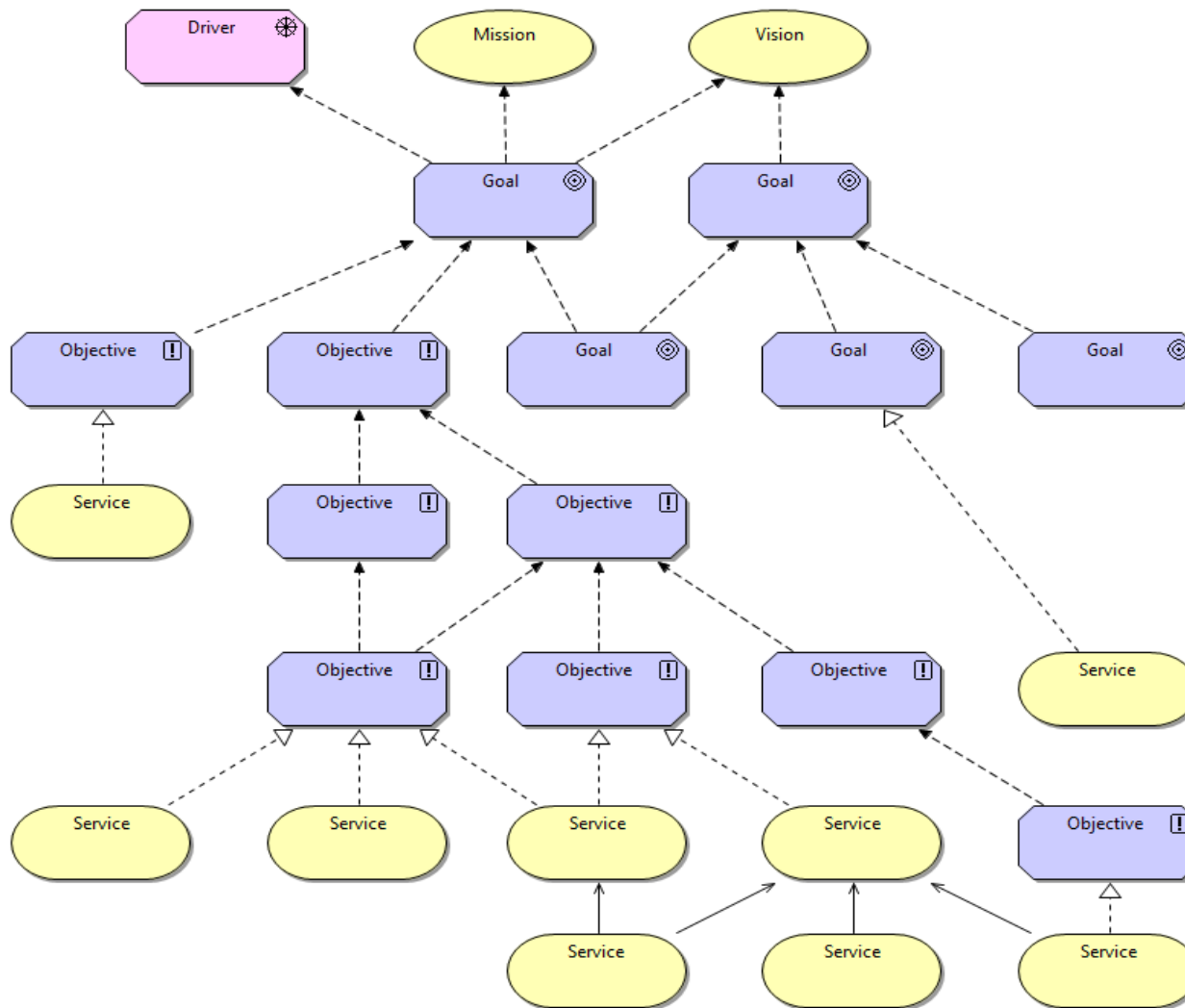


- ▶ Driver/Goal/Objective catalogue
- ▶ Driver or concern catalogue
- ▶ Stakeholder catalogue
- ▶ Aim (goal/objective/requirement) catalogue
- ▶ Directive (principle/policy/rule) catalogue
- ▶ Standards catalogue
- ▶ Regulations catalogue

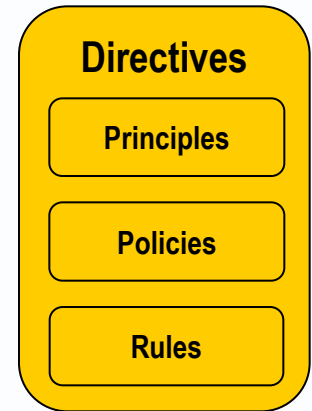
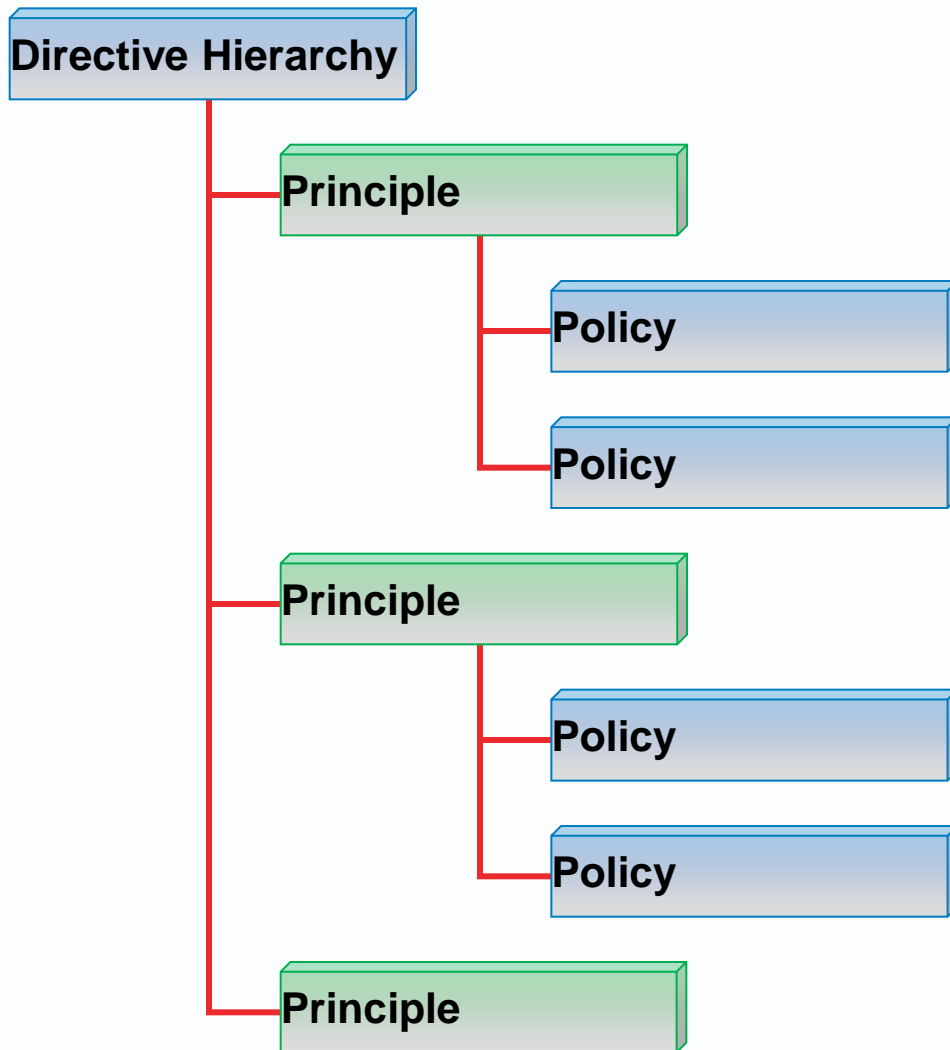
Aim catalogue: a structure



- ▶ A hierarchy (as in an Ishikawa diagram) may prove helpful.
- ▶ But generally speaking, a lower level goal may contribute to several higher levels goals
- ▶ A Balanced Score Card style of presentation may prove better.



Directives catalogue: a structure



- ▶ A hierarchical structure may prove helpful
- ▶ But generally speaking, a lower level policy may support several higher level principles

Goal or requirements traceability matrix

- ▶ Which solution elements are needed to test a requirement has been met?
- ▶ Are any requirements not addressed? Any solution elements not needed?

Solution items	Business Intelligence	Sales mobile device	CRM	Requirements that have no solution
Faster Ordering		Satisfied by		
Remote Working		Satisfied by		
Better Forecasts	Satisfied by			
Lower Sale Cost				No solution
Solution items that have no requirement			No requirement	

- ▶ The cells could refer to test cases needed.
- ▶ Note that in test-driven development you map requirements to test cases, and test cases to solution components.

TOGAF/AM Vision diagrams	ArchiMate equivalent
Value Chain	example by Pieter Van Ostaeyen
Solution Concept/ Vision	

Contents

- ▶ Value Chain/Stream diagram
- ▶ Solution Concept/Vision diagram
- ▶ Context diagram
- ▶ Business process map diagram
- ▶ Business Footprint diagram

- ▶ **Value Chain/Stream diagram**
- ▶ Solution Concept/Vision diagram
- ▶ Context diagram
- ▶ Business process map diagram
- ▶ Business Footprint diagram

- ▶ provides a high-level orientation view of an enterprise and how it interacts with the outside world.
- ▶ focuses on presentational impact.

- ▶ to quickly on-board and align stakeholders for a particular change initiative,
- ▶ so that all participants understand the high-level functional and organizational context of the architecture engagement.

- ▶ ALL TEXT IN GREY IS EDITED FROM
- ▶ TOGAF 9.1 CHAPTER 35 ARCHITECTURE ARTEFACTS

The IT value chain

► From TOG IT4IT standard

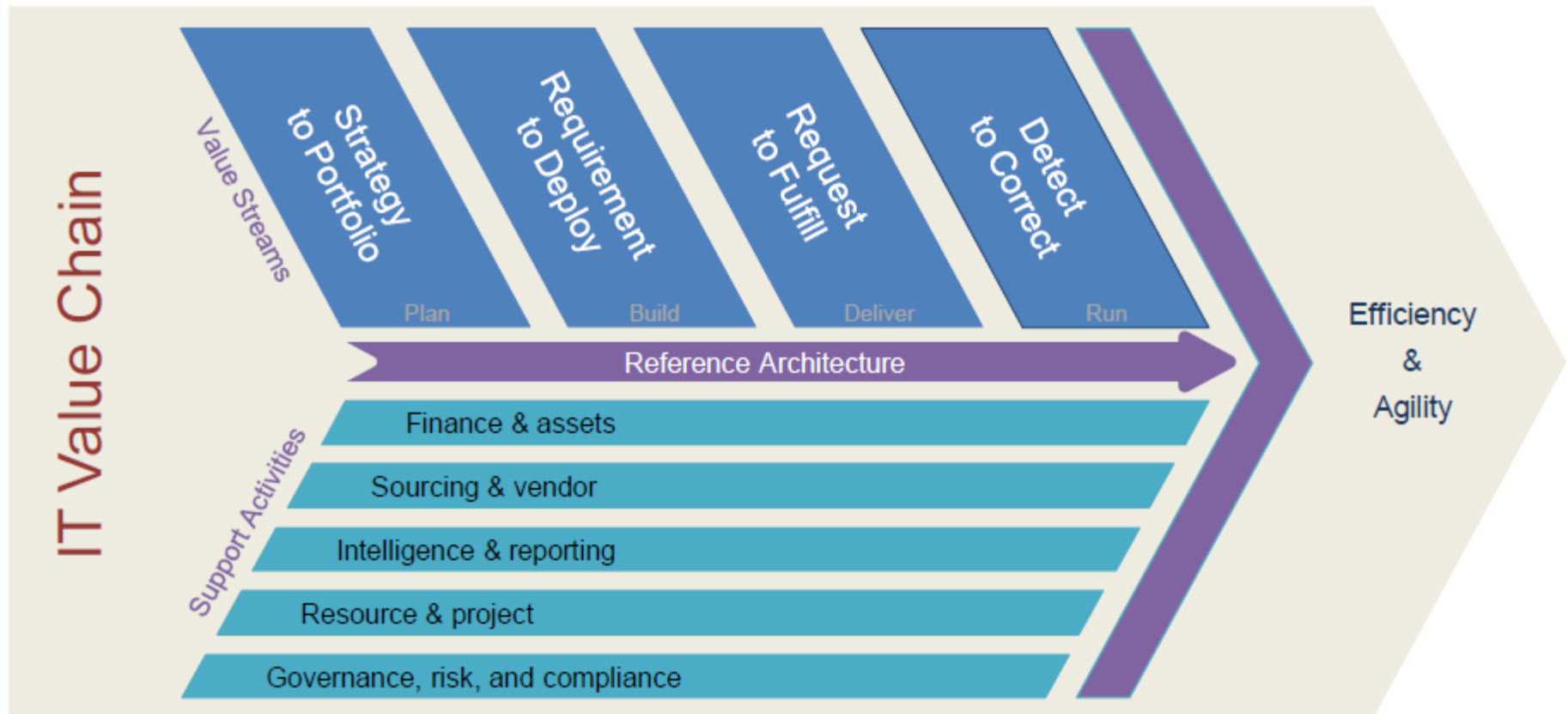


Figure 1: IT Value Chain

Value Chain diagram as a “conceptual reference architecture”

► From TOG “World Class EA” paper

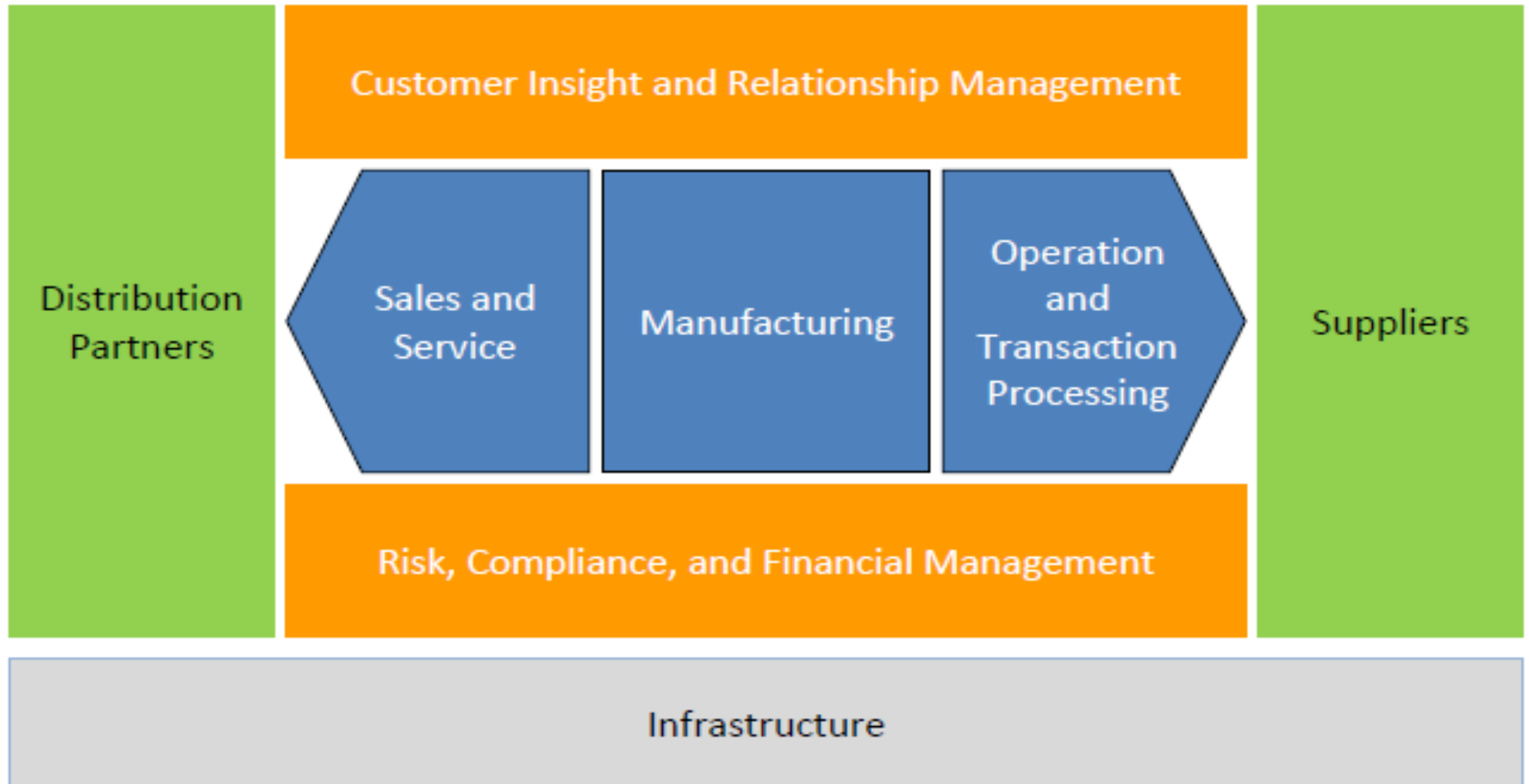
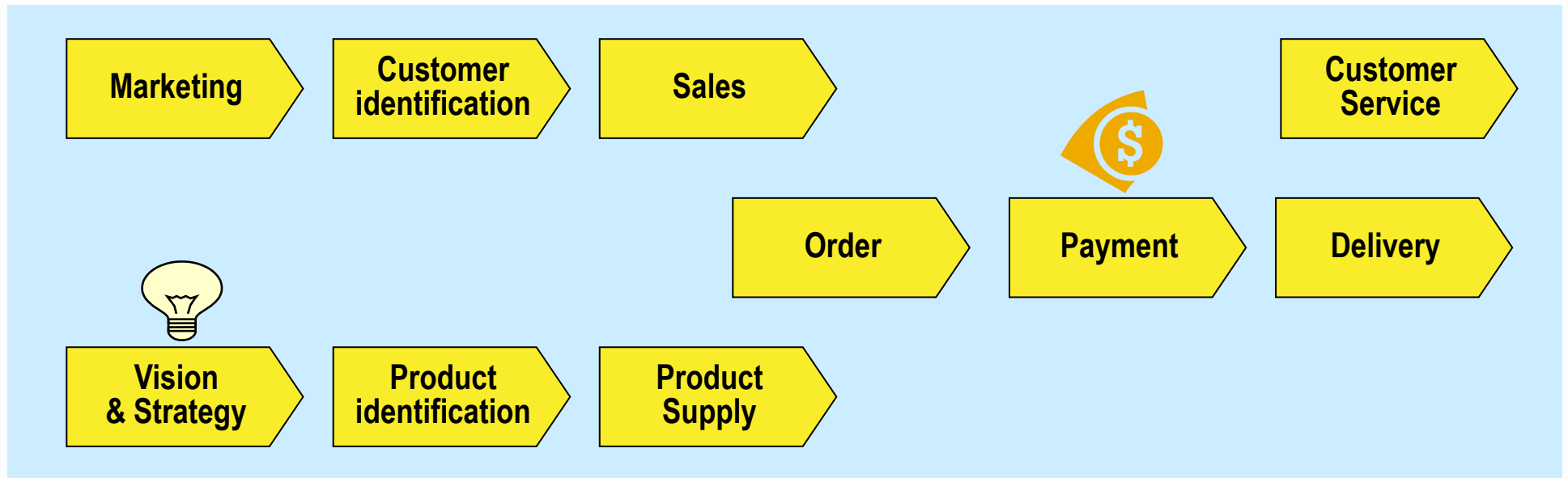


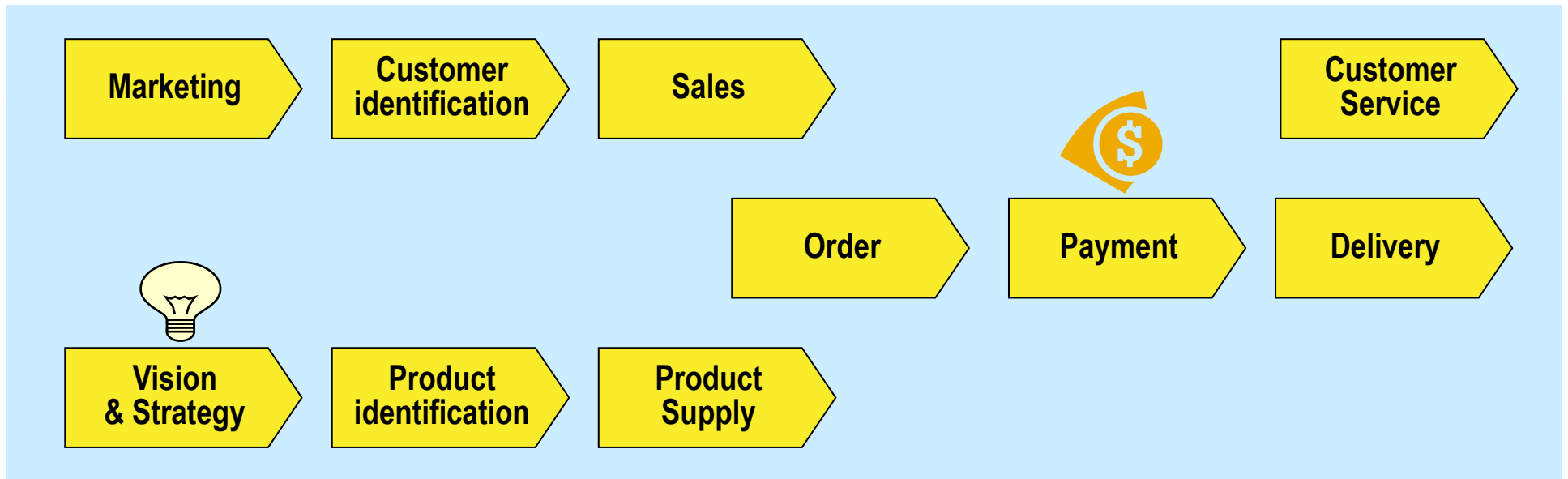
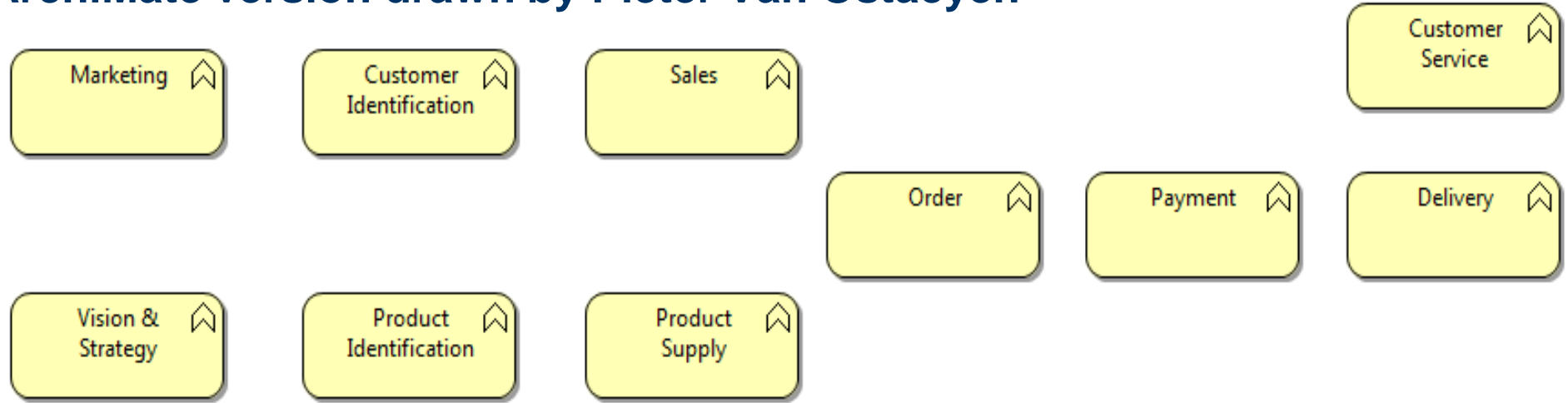
Figure 3: Conceptual Reference Architecture

Value Chain/Stream diagram: an illustration

- ▶ Less formal than a flow chart with step-to-step transitions.
- ▶ You may draw a cartoon instead.

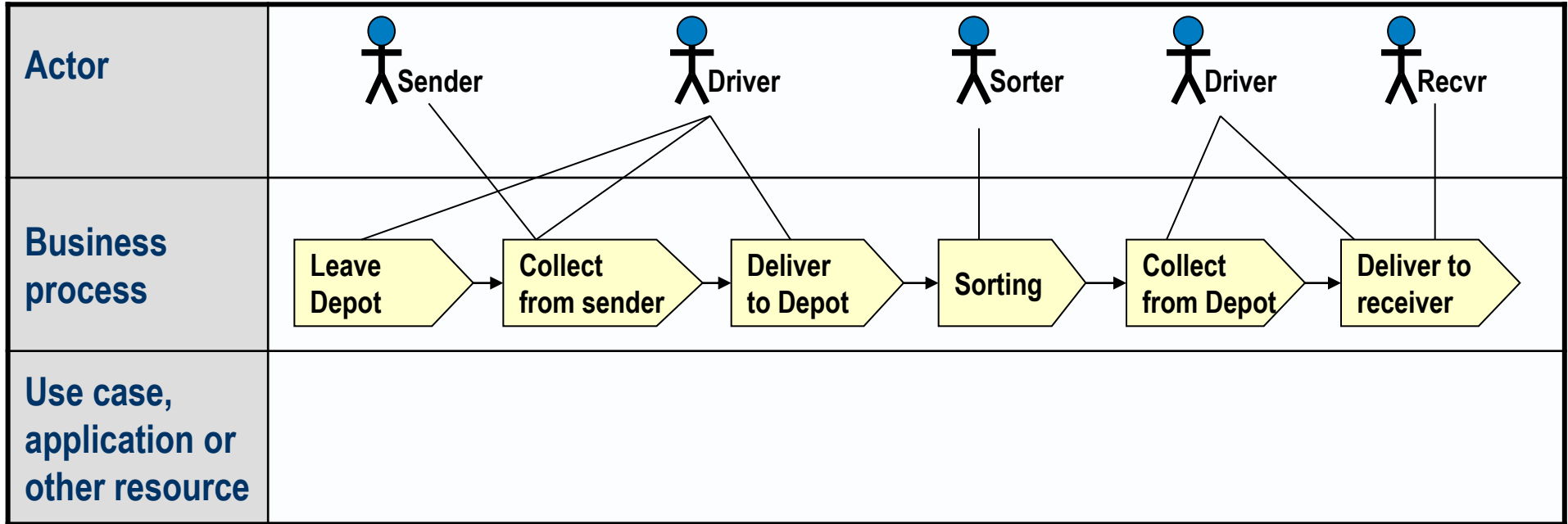


ArchiMate version drawn by Pieter Van Ostaeyen



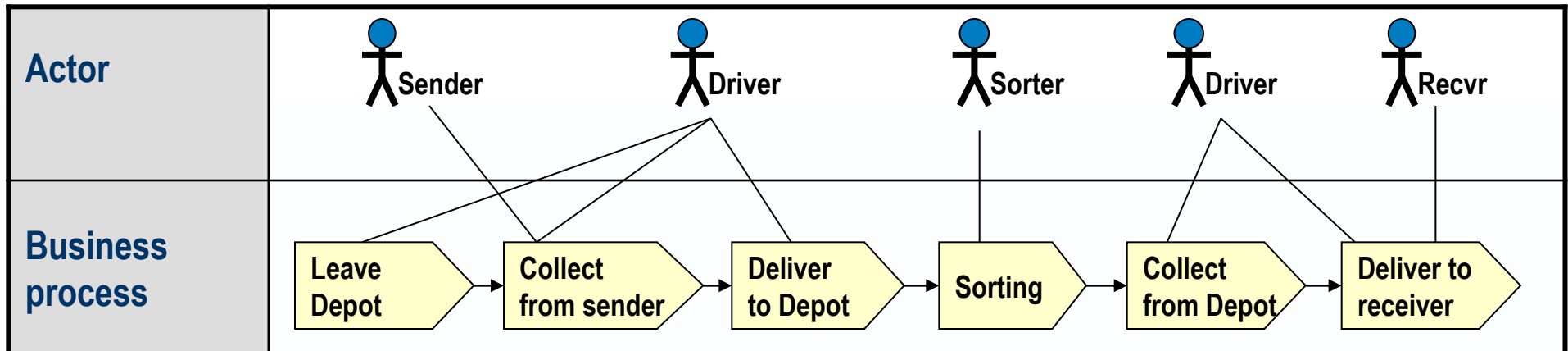
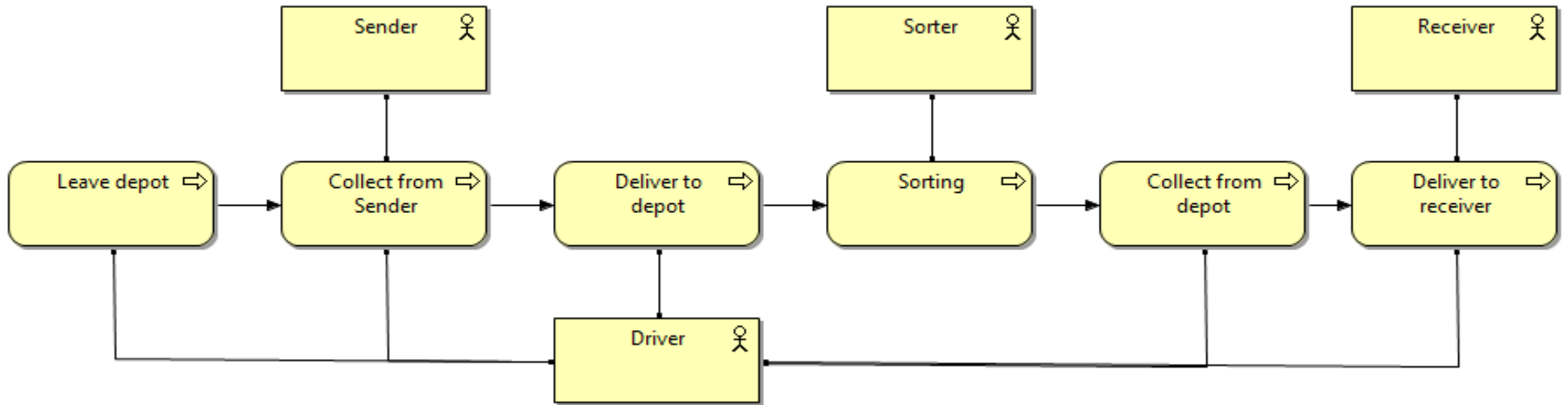
Solution-level value stream diagram

► Actors should be Roles, but people prefer the Actor symbol



Solution-level value stream diagram

► ArchiMate version drawn by Pieter Van Ostaeyen



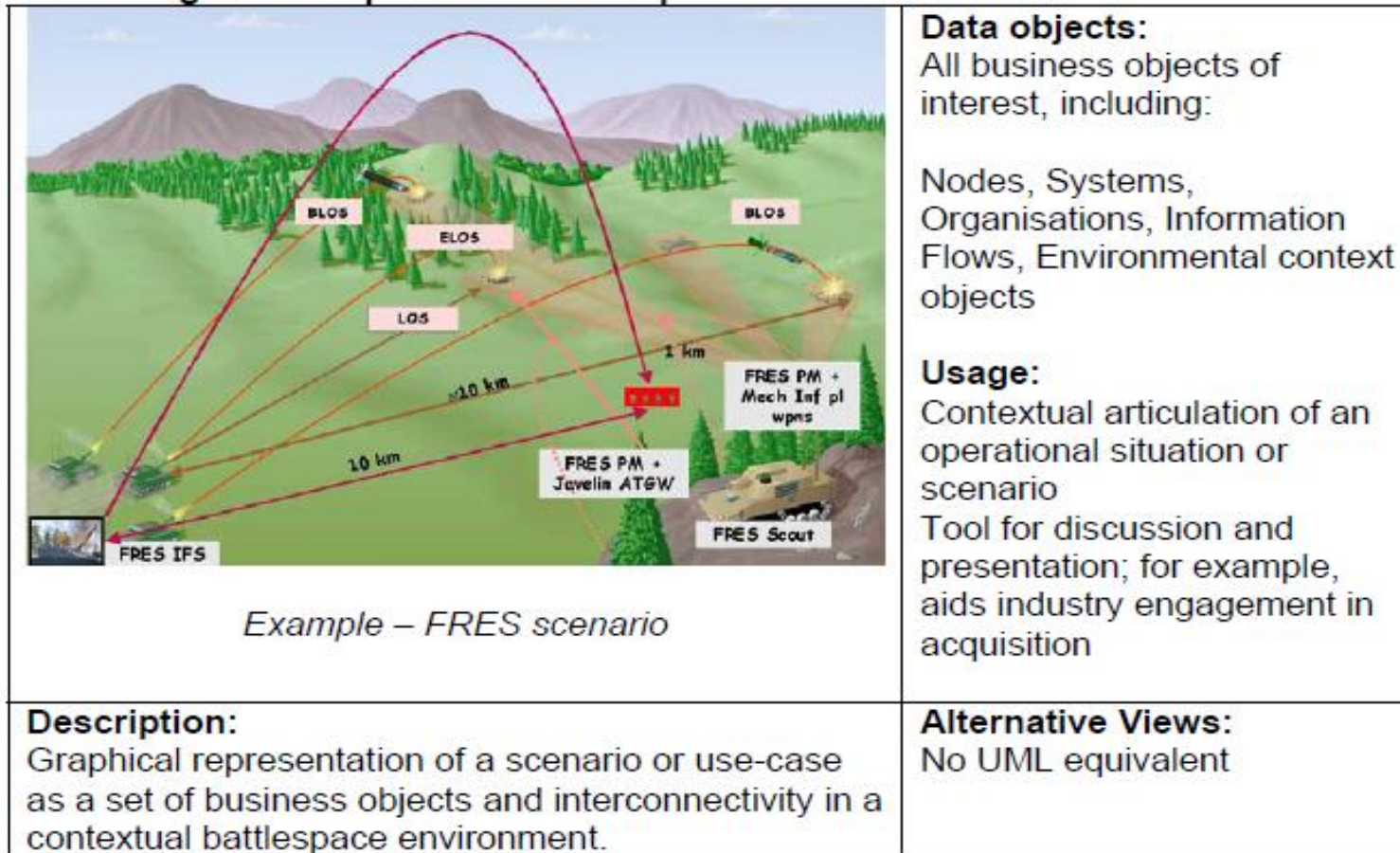
- ▶ Value Chain/Stream diagram
- ▶ **Solution Concept/Vision diagram**
- ▶ Context diagram
- ▶ Business process map diagram
- ▶ Business Footprint diagram

- ▶ What is a proposed solution; what does it do?
- ▶ Should be an engaging summary description.
- ▶ TOGAF says
 - Provides high-level orientation of solution that is envisaged in order to meet objectives of architecture engagement
 - “Pencil sketch” of expected solution at outset of engagement
 - This diagram may
 - Embody key objectives, requirements, and constraints
 - Highlight work areas to be investigated in more detail
 - Objective
 - Gain stakeholder support for a particular change initiative
 - All participants understand
 - What the architecture engagement is seeking to achieve
 - How a particular solution approach will meet the needs of the enterprise

Solution Concept/Vision diagram: MODAF style

- ▶ Based around a “rich picture” or cartoon

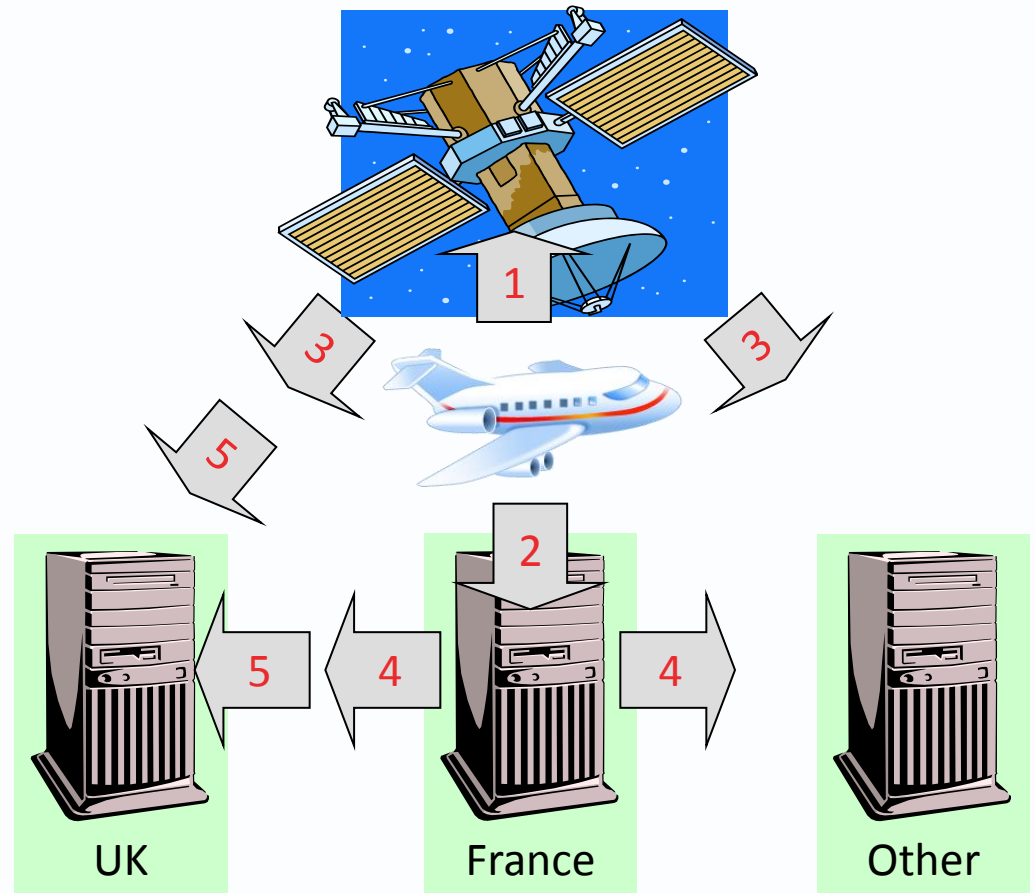
OV-1a High Level Operational Concept



Solution Concept/ Vision diagram: rich picture

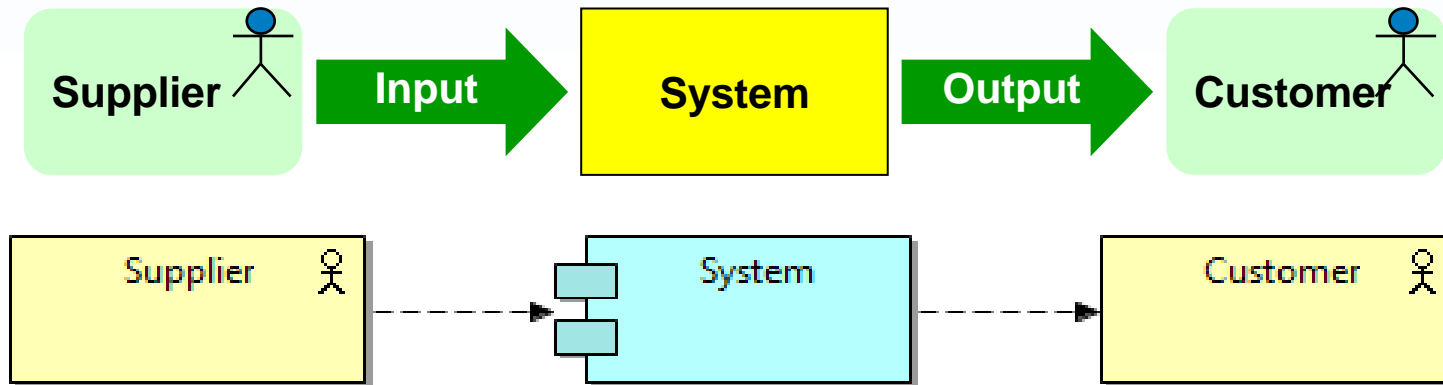
Problem: how to maintain integrity of airplane position data?

1. Airplane sends time-stamped airplane/position message to satellite
2. Airplane also sends time-stamped airplane/position message to data centre (e.g. France) of controller responsible for current air space
3. Satellite forwards the airplane/position message to UK and others
4. France forwards the airplane/position message to UK and others
5. UK receives messages
6. UK replaces airplane/position record *if time stamp of message is later than time stamp of message last processed*



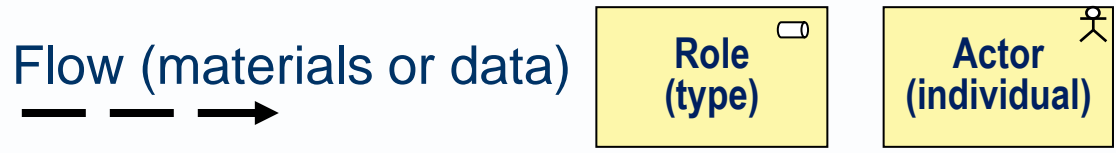
- ▶ Value Chain/Stream diagram
- ▶ Solution Concept/Vision diagram
- ▶ **Context diagram**
- ▶ Business process map diagram
- ▶ Business Footprint diagram

- ▶ What is the scope of a system?
- ▶ What goods, service or data flows are input and output?
- ▶ What external entities supply inputs or consume outputs?

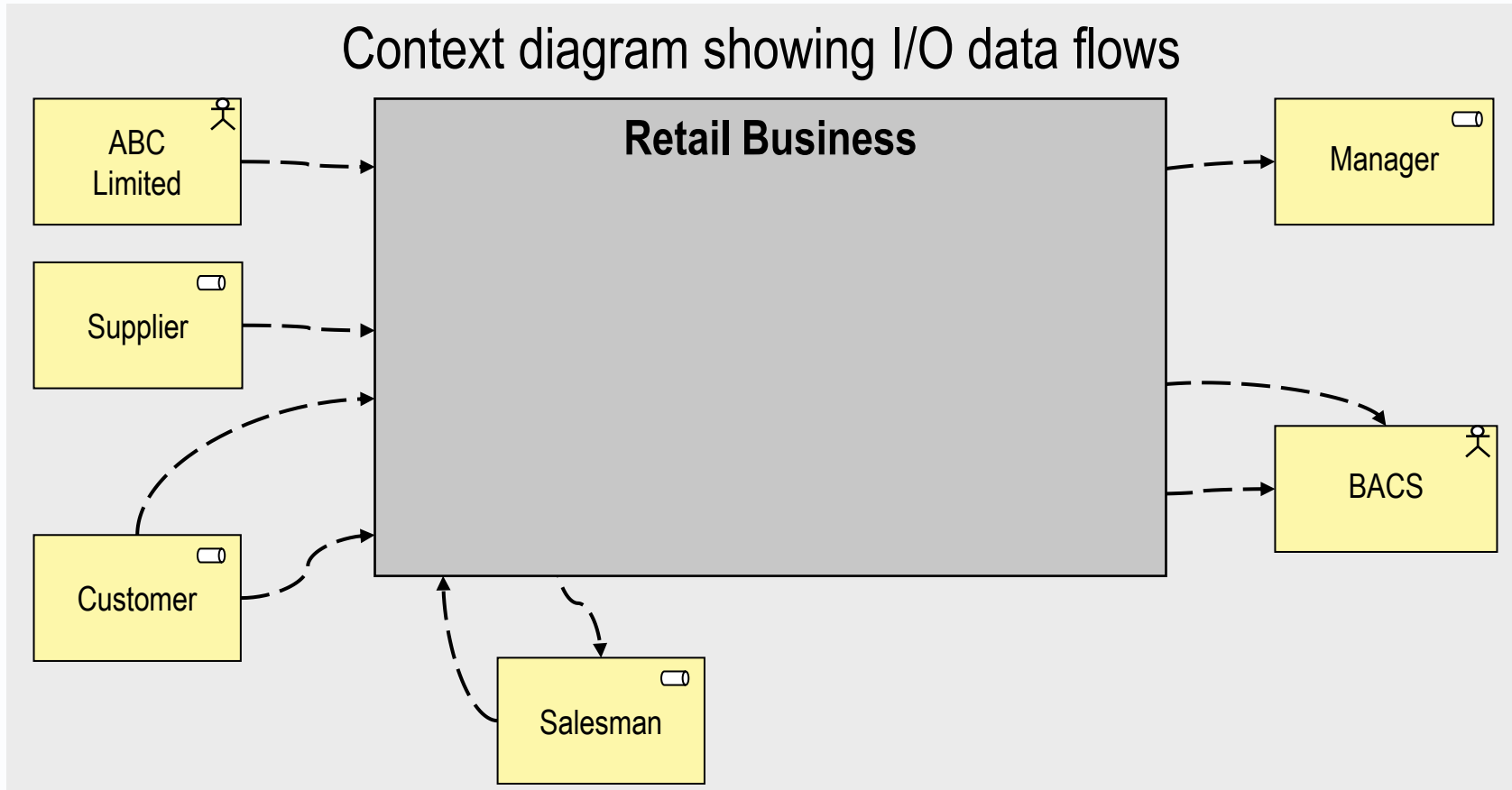


- ▶ Shows why the system exists
 - the system that is the focus of design
 - the external entities, inputs and outputs around the boundary.
- ▶ Does not show what the system is made of
 - parts or components are hidden from view

Context diagram (ArchiMate style)

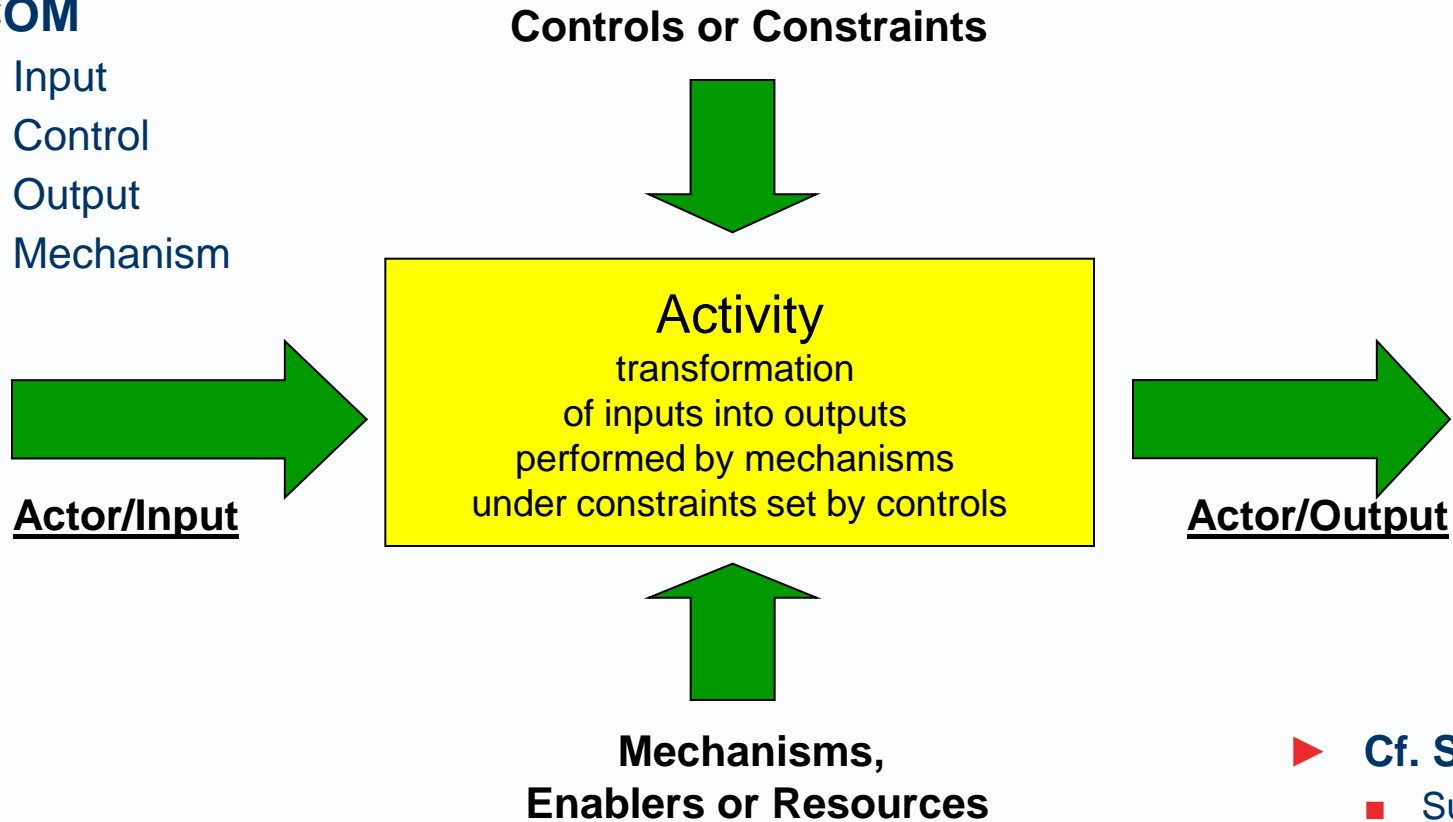


Context diagram showing I/O data flows



▶ ICOM

- Input
- Control
- Output
- Mechanism



▶ Cf. SIPOC

- Supplier
- Input
- Process
- Output
- Customer

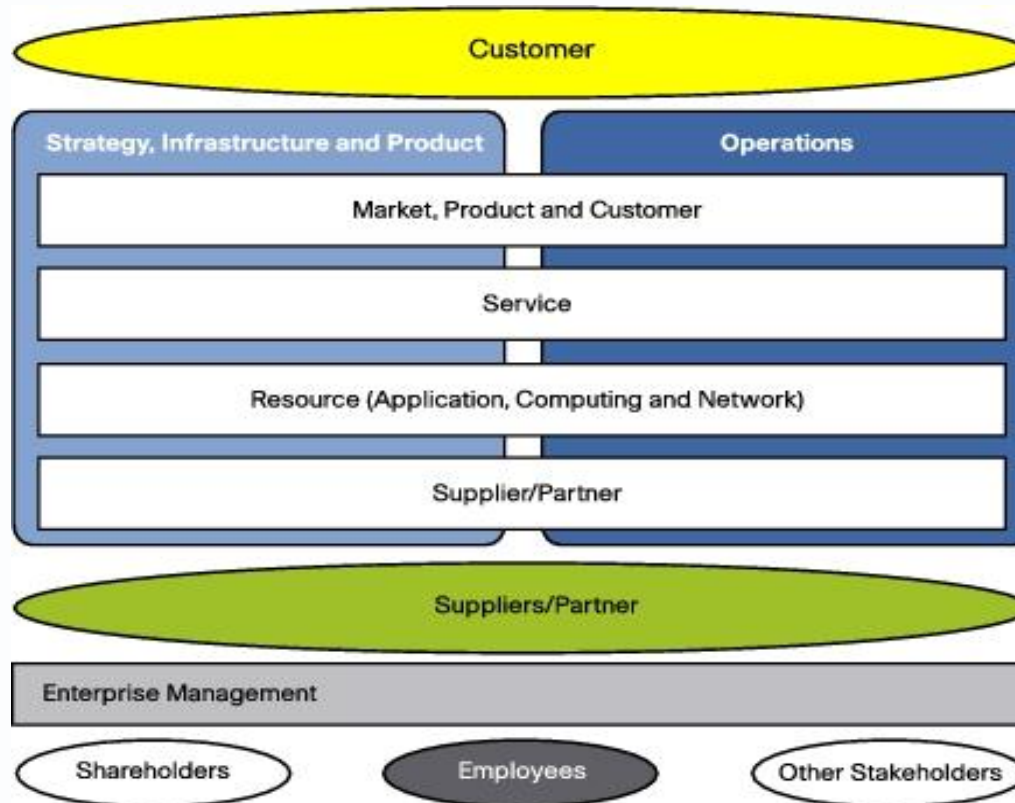
Business process map diagram

- ▶ Value Chain/Stream diagram
- ▶ Solution Concept/Vision diagram
- ▶ Context diagram
- ▶ **Business process map diagram**
- ▶ Business Footprint diagram

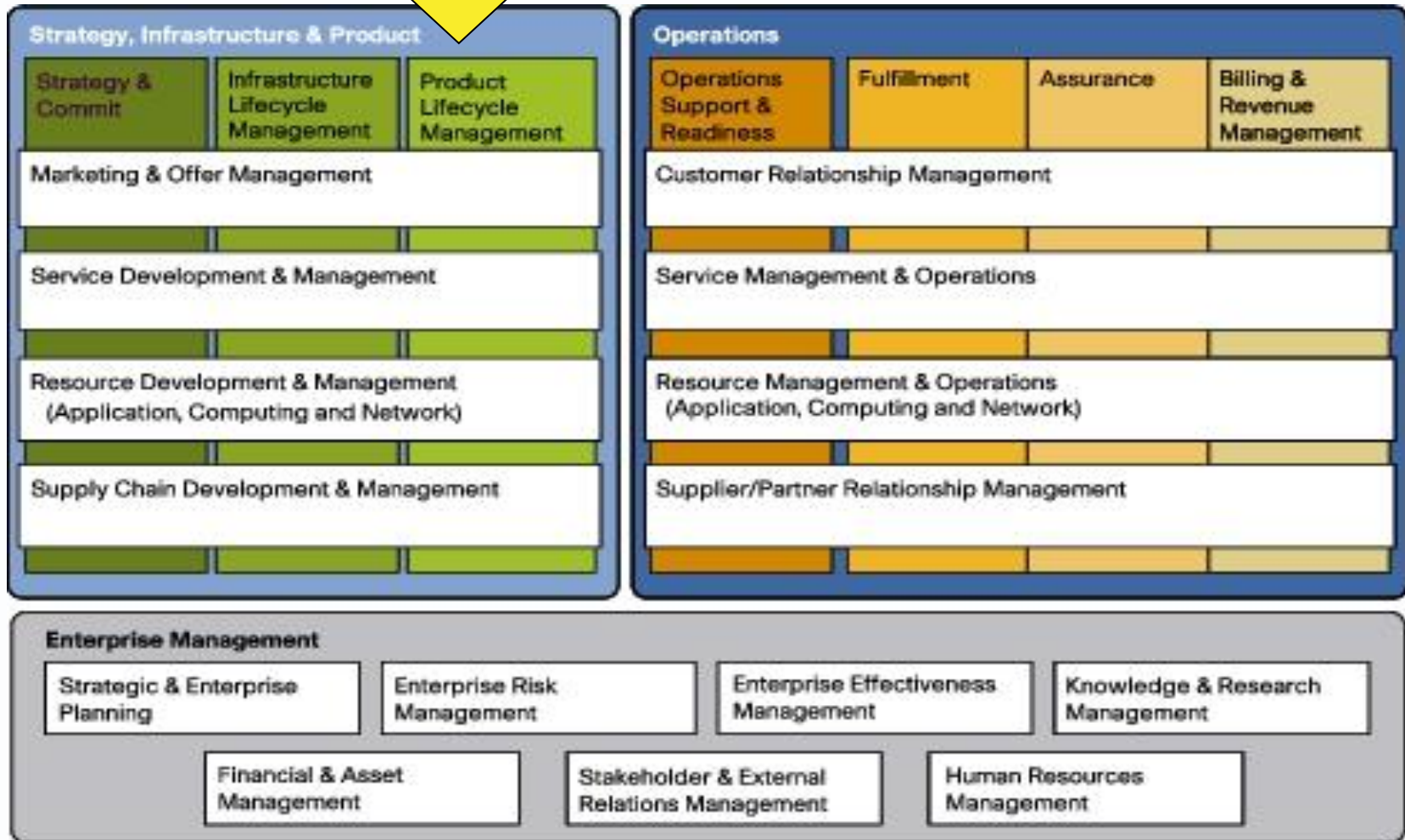
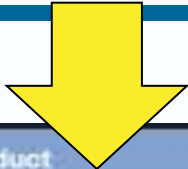
Business process map diagram

- ▶ What processes are carried out in an enterprise or system?
- ▶ A summary and ideally engaging graphical representation.

TMF eTOM
Level 0



eTOM Level 1 Model (Copyright TM Forum)

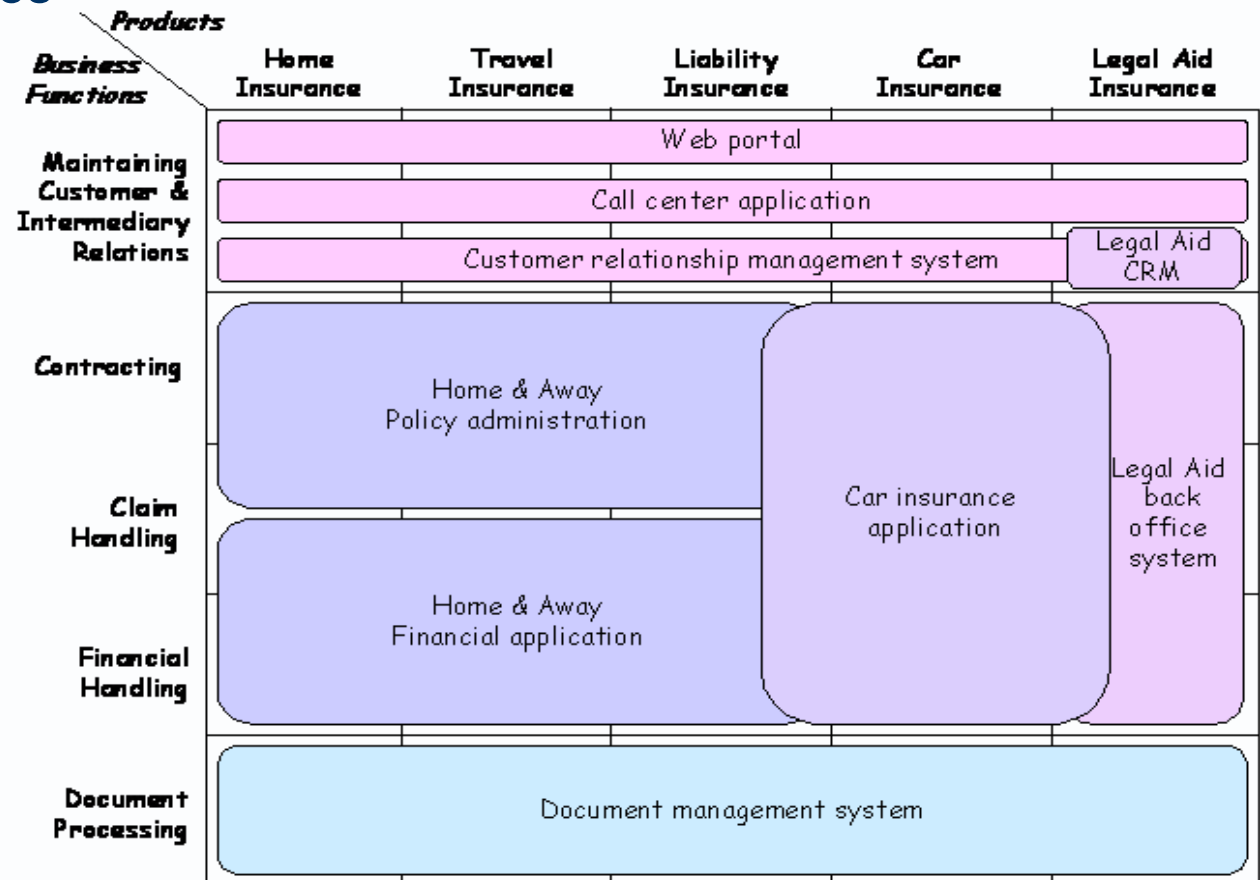


ArchiMate: Landscape Map Viewpoint

Cf. Business process map



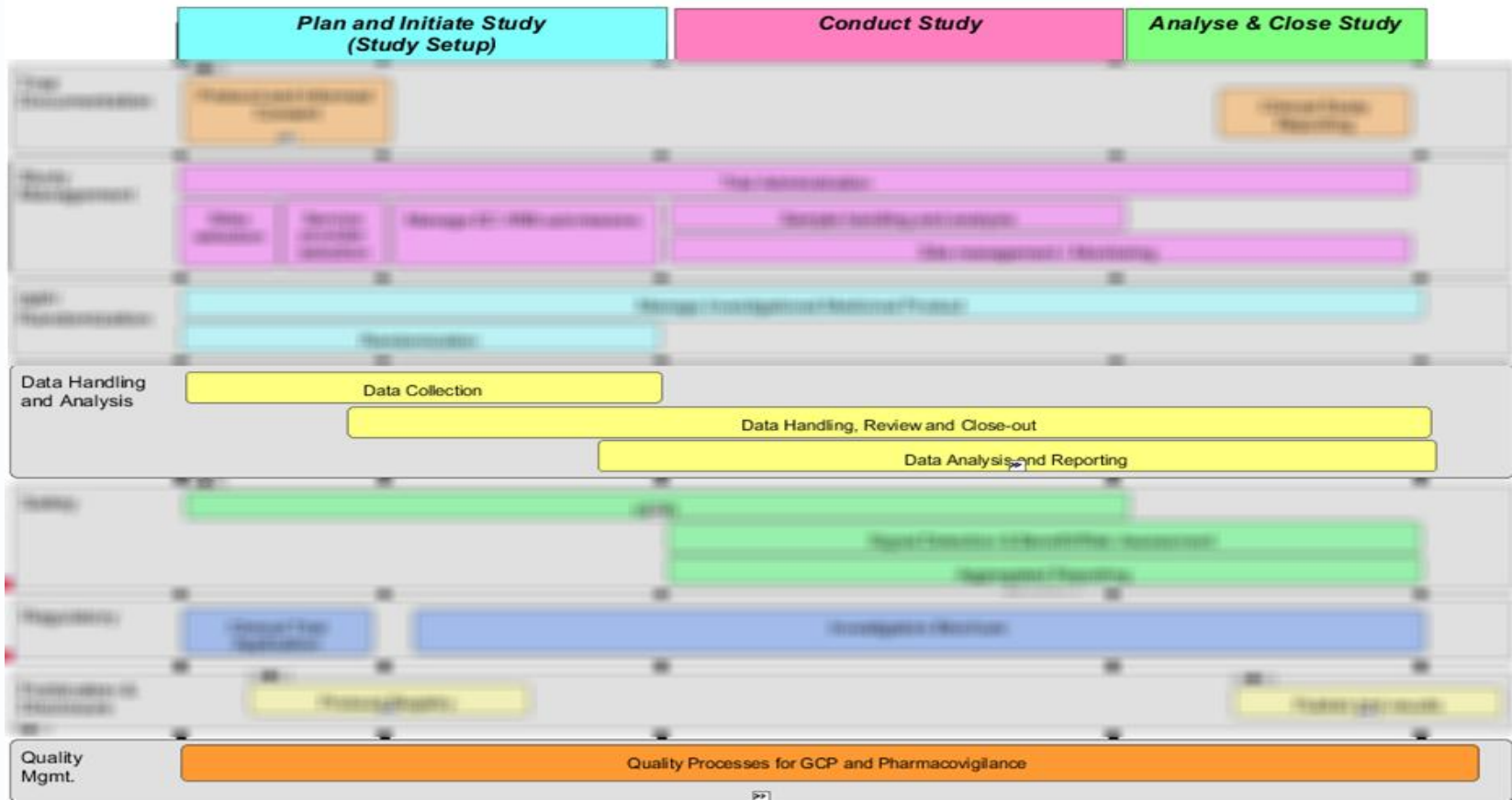
- ▶ Stakeholders: Enterprise architects, top managers: CEO, CIO
- ▶ Concerns: Readability, management and reduction of complexity, comparison of alternatives



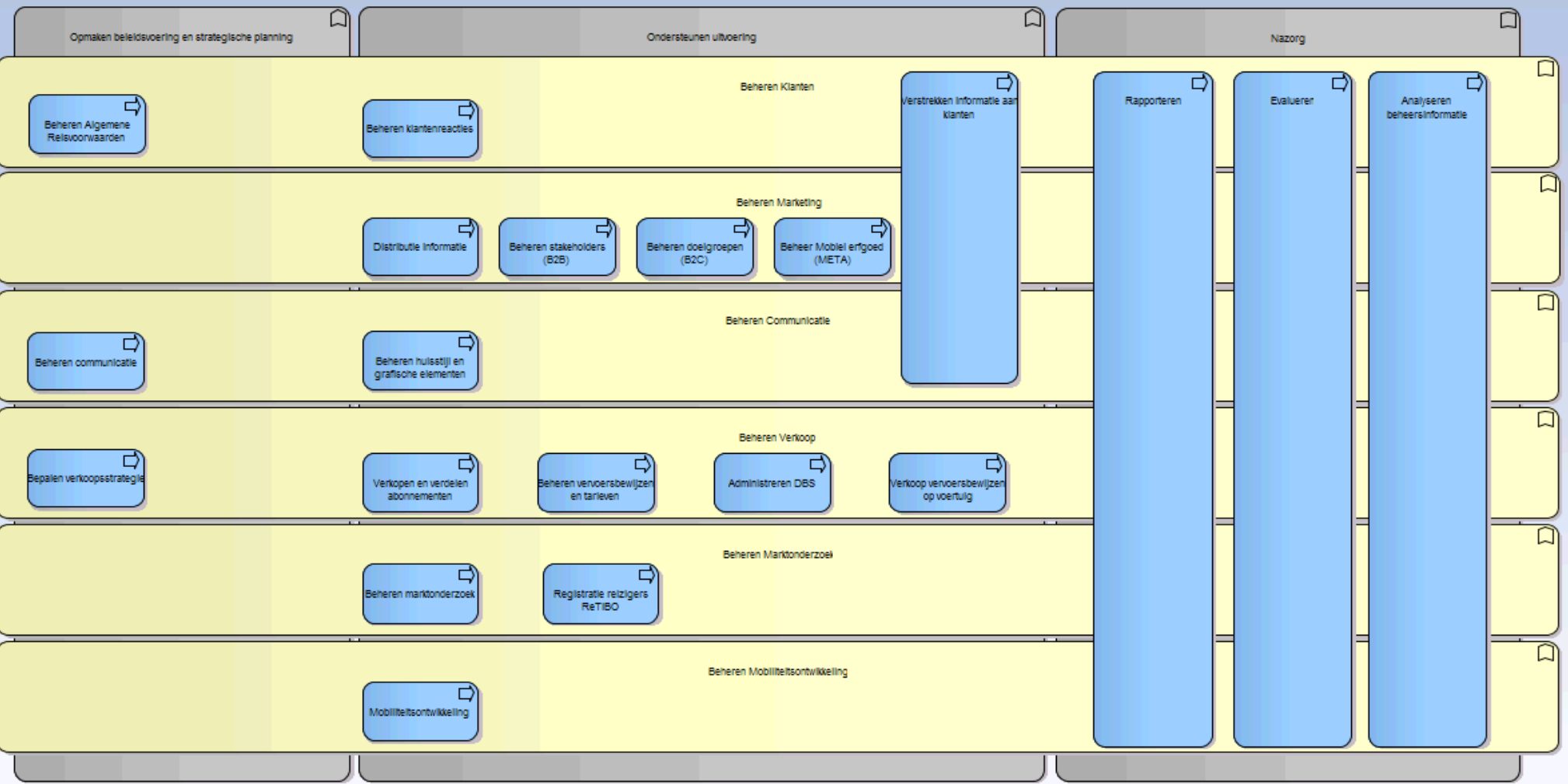
Copyright © 2009-2012 The Open Group, All Rights Reserved. ArchiMate is a registered trademark of The Open Group.

Business process map diagram: illustration

Global enterprise



ArchiMate version drawn by Pieter Van Ostaeyen



Business Footprint diagram

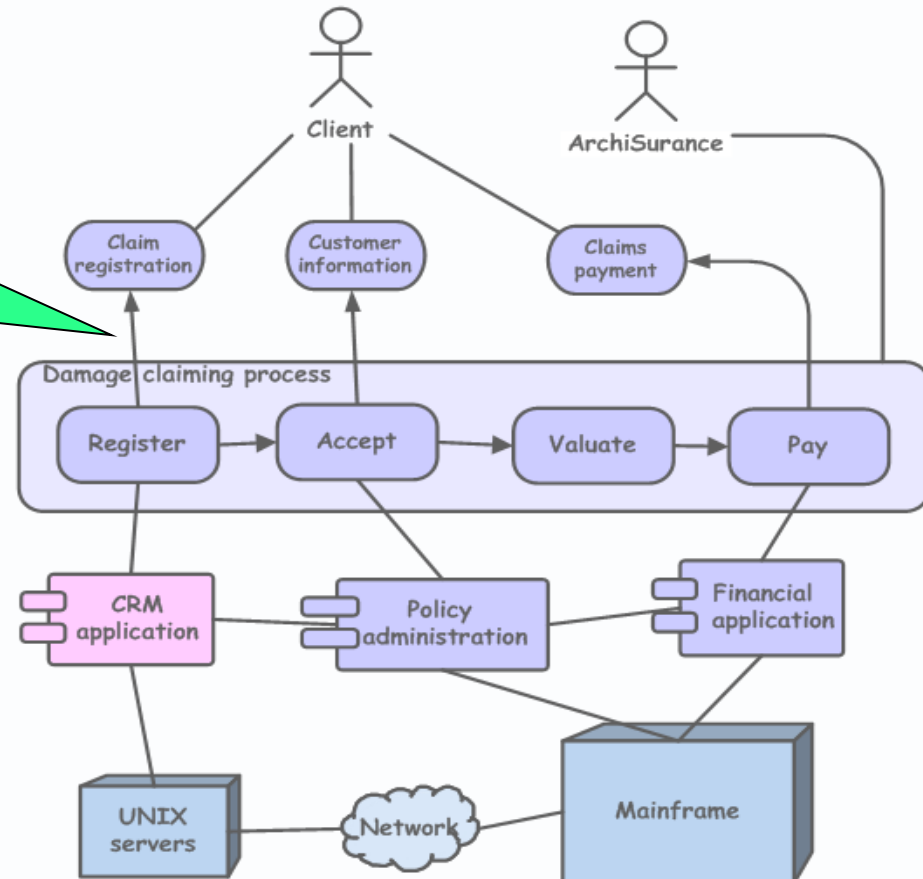
- ▶ Value Chain/Stream diagram
- ▶ Solution Concept/Vision diagram
- ▶ Context diagram
- ▶ Business process map diagram
- ▶ **Business Footprint diagram**

- ▶ describes the links between business goals, organizational units, business functions, and services,
- ▶ maps these functions to the technical components delivering the required capability.
- ▶ provides a clear traceability between a technical component and the business goal that it satisfies
- ▶ demonstrates ownership of the services identified.
- ▶ demonstrates only the key facts linking organization unit functions to delivery services and is utilized as a communication platform for senior-level (CxO) stakeholders.

ArchiMate: Introductory Viewpoint

- ▶ Stakeholders: Enterprise architects, managers
- ▶ Concerns: Make design choices visible, convince stakeholders

Note this arrow does not have the proper ArchiMate meaning, so the diagram is a cartoon



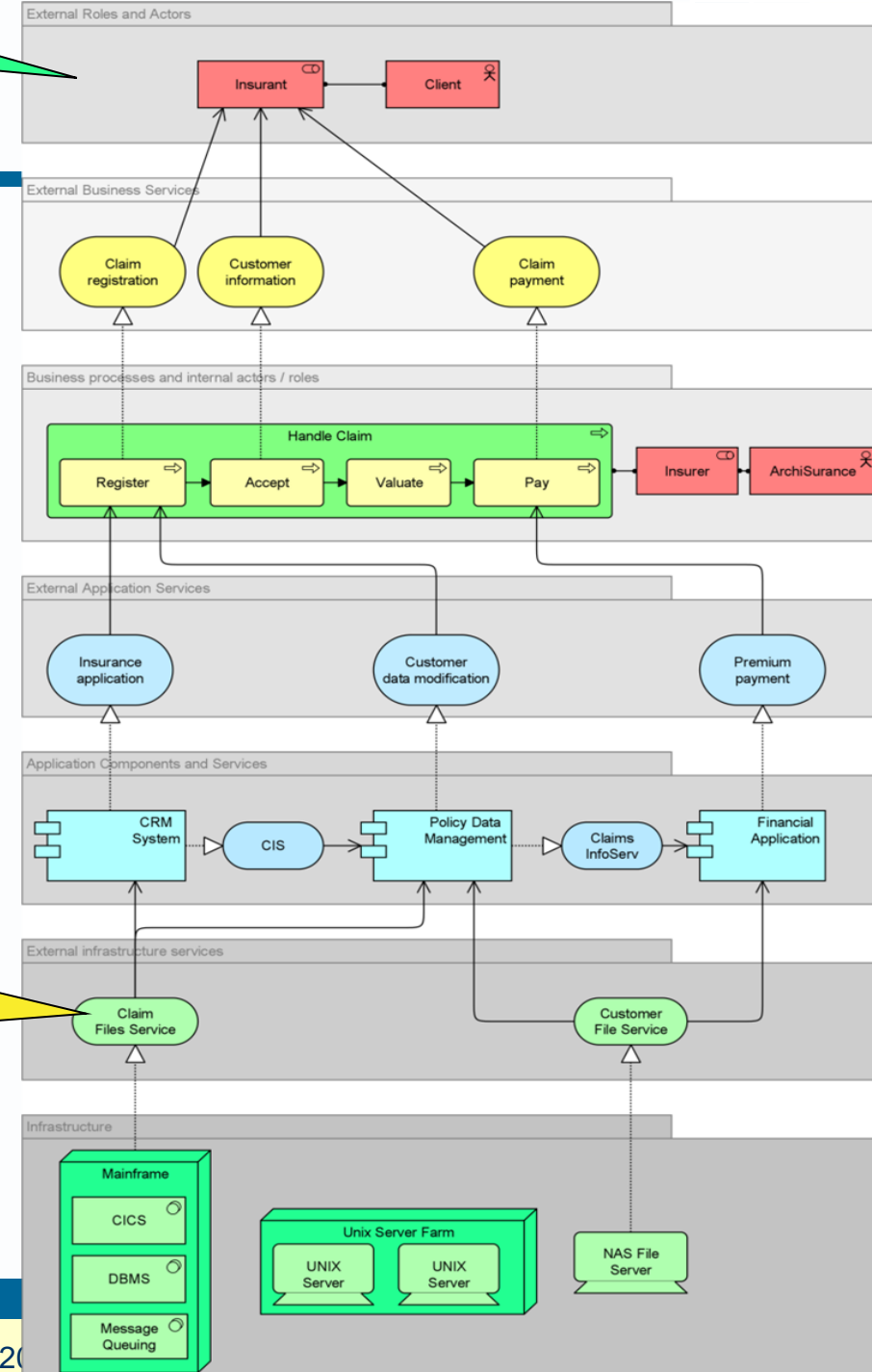
Cf. Business footprint diagram

ArchiMate: Layered Viewpoint

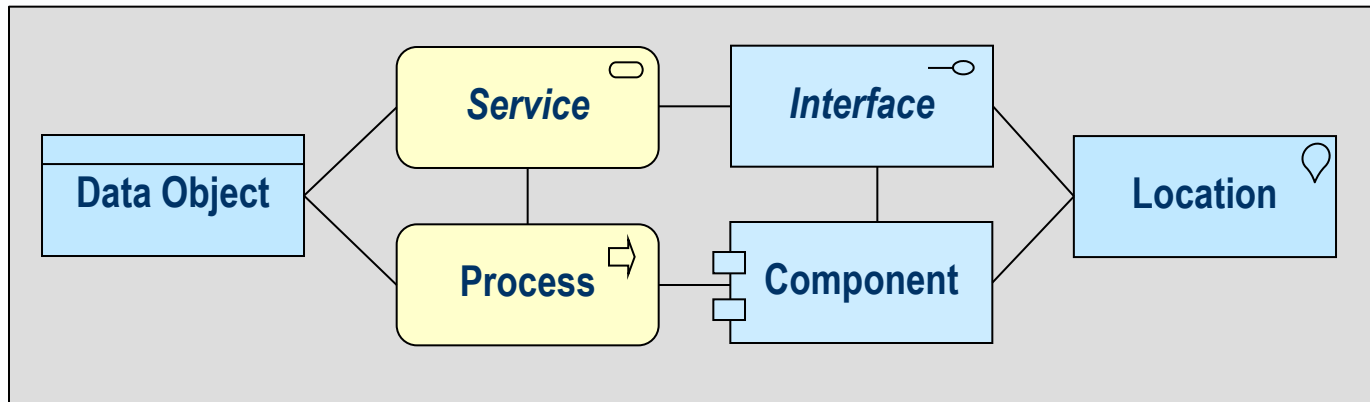
- ▶ Stakeholders: Enterprise, process, application, infrastructure, and domain architects
- ▶ Concerns: Consistency, reduction of complexity, impact of change, flexibility

Look like application services rather than platform services

Copyright The Open Group, All Rights Reserved. ArchiMate is a registered trademark of The Open Group.



- ▶ There is far from a common understanding of the four concepts at the heart of this diagram: process, service, component and interface



- ▶ **Avancier Methods** can be used on their own
- ▶ and/or to supplement any architecture framework that shares similar domains and entities
- ▶ <http://avancier.co.uk>

